

Elements to consider before starting a project

1-Choice of the garment (material)

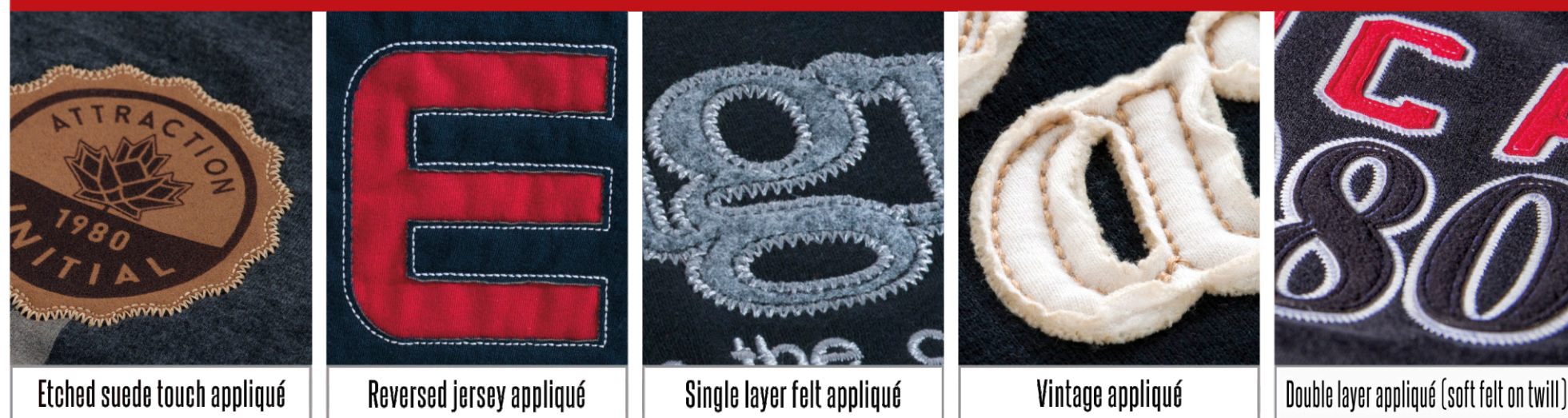
It is possible to embroider many types of material. For optimal results, favour heavier and darker materials. Lightweight and pale fabrics, (a white fine gauge jersey for example) will risk pleating and the backing will show through more than with French Terry or fleece.



2-Embroidery type recommended according to the material of the garment

Jersey garment ★	French Terry garment ★★	Fleece garment ★★★
 <p>Limited embroidery possibilities. Choose simple embroideries with a light contour or a single jersey appliqué with a running stitch.</p>	 <p>Avoid large embroidery masses. Opt for an embroidery\jersey appliqué combination or felt appliqué with a zig-zag or running stitch.</p>	 <p>All embroidery types are possible! You can also combine your embroidery with appliqués such as felt, twill, etc, with a satin contour stitch.</p>

3-Different types of appliqués are available, here are some examples:



4-The number of letters



An even quantity of letters will be easier to center on a zipper.

If the quantity of letters is uneven, it is possible to rebalance by adding a screen printing in the background, or a graphic element to the lettering with the decoration technique of your choice.

We recommend an appliqué with a maximum of 10 letters on any garment. Beyond this, the words will be difficult to read. In addition, the cutting will be less accurate and small gaps cannot be inserted between the letters.

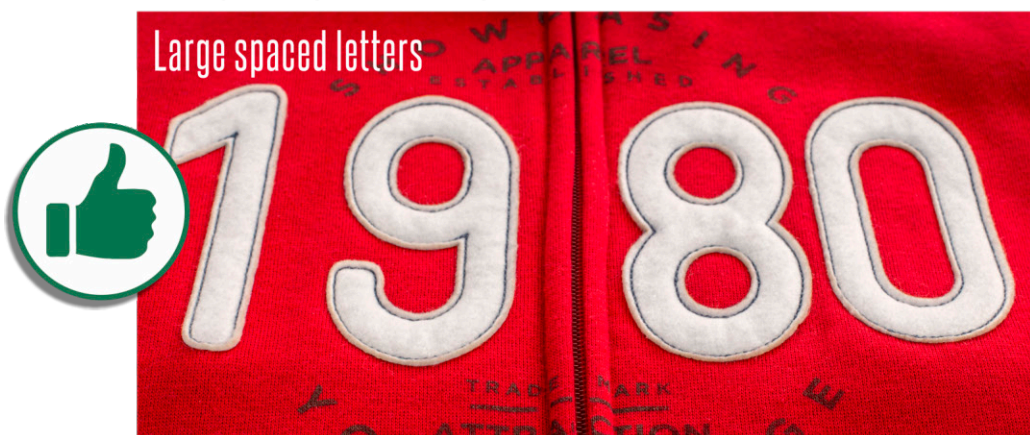


A laser cut is used for felt and twill. It is therefore possible that faint yellowish or brownish marks appear on some portions of the appliqué's trim composed of white or off-white felt or twill.



You can minimize these marks by using one of the following methods:

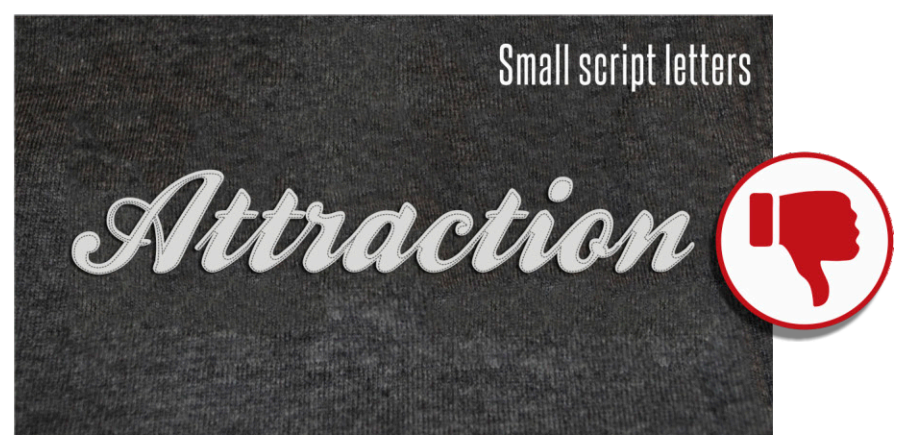
1- By magnifying and spacing the letters.



2- By adding a satin or zig-zag stitch to cover the edge of the appliqué.



4- By avoiding small script letters.



3- By washing the garment. Note that Attraction does not offer a laundry service.



5- By choosing a darker colored twill or felt fabric.

