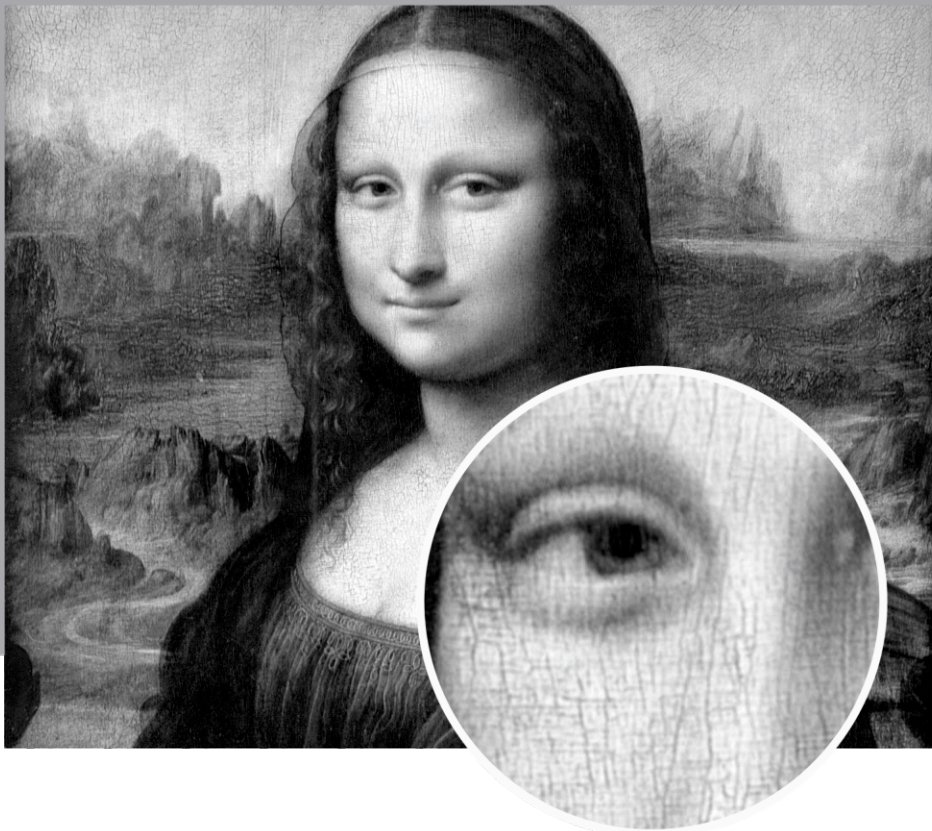
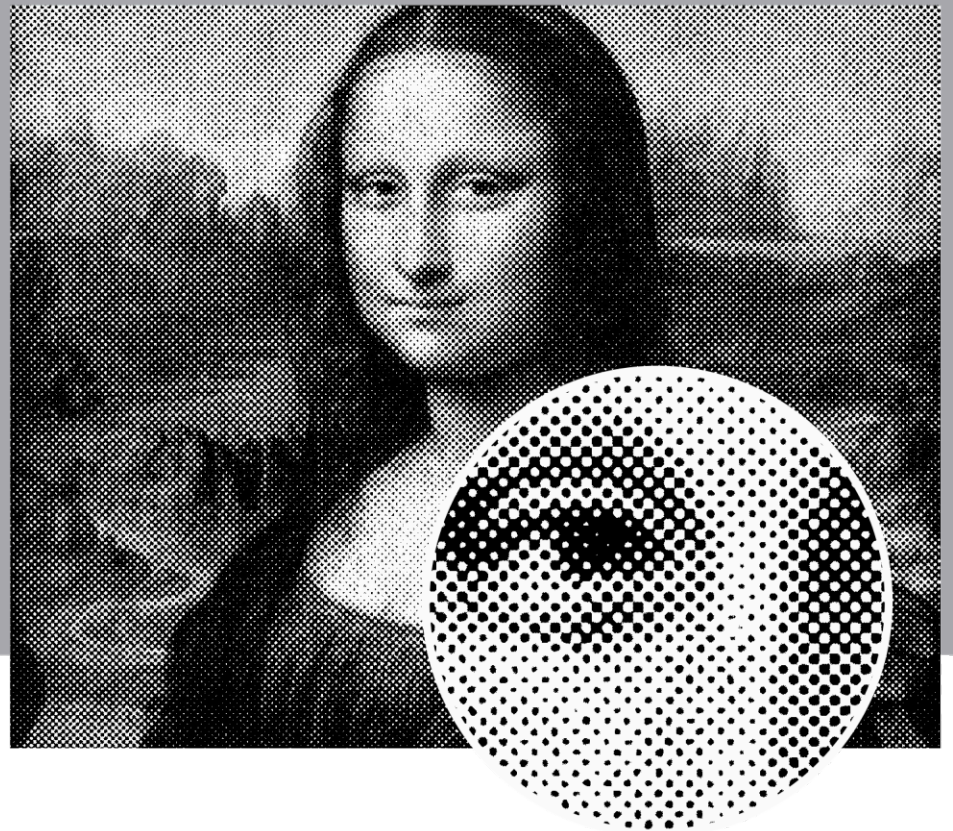


Halftone prints are made up of tiny printed dots to create an image, while giving a soft feel to the print. Separated into the cyan, magenta, yellow and black primary colors, halftones are the foundation of process printing.

Original image



Halftone processed image



They are also used to render the different hues of the same ink color. For example, small ink dots distanced appropriately and printed white on a red t-shirt will appear pink-colored when seen from a distance.



LIMITATIONS

- Fabric surfaces are imperfect and halftone dots are very small. Therefore, some dots can fall between the threads and create visible imperfections.
- It is difficult to register a white background under halftones, thus the colors' brightness is limited when printing on dark clothing.



A tone-on-tone image using halftones on a light garment will appear reversed on a dark-colored clothing. If your order includes dark and light-colored garments, you should anticipate the cost for two different designs.